



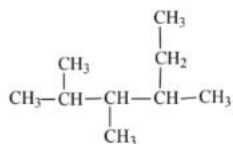
Answer Key: Organic Compounds Nomenclature -2

Part 1

Family of Compound	Structure	Suffix
Carboxylic Acid	$\text{R}-\overset{\text{O}}{\parallel}{\text{C}}-\text{OH}$	-oic acid (-carboxylic acid)
Aldehyde	$\text{R}-\overset{\text{O}}{\parallel}{\text{C}}-\text{H}$	-al
Ketone	$\text{R}-\overset{\text{O}}{\parallel}{\text{C}}-\text{R}'$	-one
Alcohol	$\text{R}-\text{OH}$	-ol
Ether	$\text{R}-\text{O}-\text{R}'$	-ane ; -oxy- ; -ether (accept any stated)
Ester	$\text{R}-\overset{\text{O}}{\parallel}{\text{C}}-\text{O}-\text{R}'$	-oate
Amine	$\text{R}-\overset{\cdot\cdot}{\text{N}}\text{H}_2$	-amine
Alkene	$\text{R}-\overset{\cdot}{\text{C}}=\overset{\cdot}{\text{C}}-\text{R}'$	-ene
Alkyne	$\text{R}-\text{C}\equiv\text{C}-\text{R}$	-yne

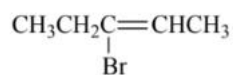
Part 2

1.



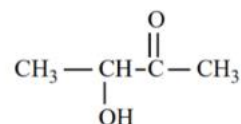
2,3,4-trimethyl hexane

2.

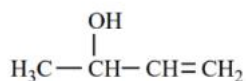


3-bromo-2-pentene

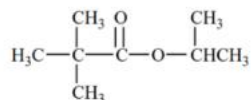
3.

3-hydroxybutan-2-one
Or
3-hydroxy-2-butanone

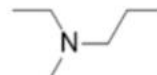
4.

3-buten-2-ol or
2-hydroxybutene

5.

1-methyl ethyl -2,2-
dimethylpropanoate
Or
Isopropyl-2,2-
dimethylpropanoate

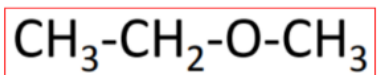
6.

N-ethyl N-methylpropyl-1-
amine

(Ns, and 1 not required)

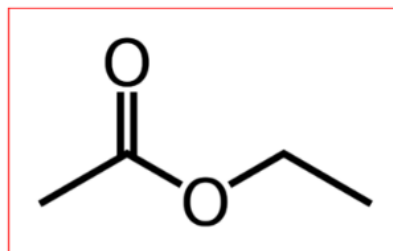
Part 3

1.



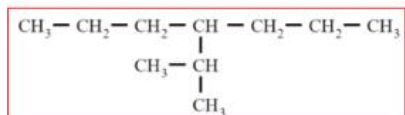
ethyl methyl ether

2.



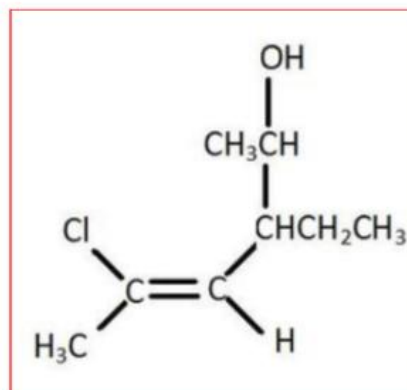
ethyl ethanoate

3.



4-(1-methylethyl)heptane

4.



5-Chloro-3-ethyl-4-hexen-2-ol.